



THE COMPANY



PRODUCTION AREA 31.000 sq. m



Watch the video: [Big show at 4.000 meters](#)

Company name:	LUIGI CATTANEO SPA
Legal Status:	Limited company
Capital stock:	€ 3.000.000,00 paid in full
Property:	100% Cattaneo's family
Chairman:	Sir Gerolamo Cattaneo
Established:	1954
Production line:	Building tower crane
Average production*:	530 units per year

(*) Data referring to the average of years between 1998 and 2009

Luigi Cattaneo SPA was founded in Magnago (Milan-Italy) in 1954 as a company specialized in the construction of building tower cranes. Under the management of Cattaneo's family, the company is now **one of the most significant example** of all the companies dealing in tower cranes, also thanks to the constant research of advanced technical solutions and to the ability of its own workers.

For many years Luigi Cattaneo Ltd is a fixed reference point for those companies who look for trusty, complete, modern and updated cranes: **the diffusion of the Cattaneo trademark** all over the country confirms this.

During the years, Cattaneo cranes have been exported and appreciated all over Europe and the entire world, carrying on and spreading the positive image of the **leader company in building tower cranes**.

OUR QUALITY

Why choose a Cattaneo crane.

The cranes made at our factory are projected and built to be reliable, last in time and ensure to the client, everywhere they are, in case of need, a ready availability of spare parts and specialized technicians. The technical office guarantees a valid pre and post selling technical assistance.

Quick assembling hydraulic crane.



No electrical components on the jib and on the high parts of the crane.

Mechanisms and engines easily accessible for inspection: engines, limit switches, load limiting devices, whole electric system, gauge and oleo dynamic gearbox placed on the base of the crane for an easy maintenance and adjustment on ground.



Complete equipment.

All Cattaneo hydraulic cranes are supplied in series with hot galvanization of the tower, jib and tie-rods, with job-site axle with 4 big pneumatic wheels, assembling and finishing ballast.



Transportation on lorry within the loading gauge.

All Cattaneo cranes, in tow position, complete with axle and wheels, are transportable on lorries within the loading gauge according to the maximum measurements allowed by the Highway Code.



Planning and technical office

Cattaneo cranes are entirely planned by the Luigi Cattaneo Ltd technical office.

Planning, construction and prototype tests, carried on according to the Certified Quality System procedures, have to allow the realization of a new project adequate to the market requests, considering the technique and acquired knowledge deriving from the experience accumulated in over fifty years, to a solid technical tradition and the will of innovation.

The whole planning project is managed in a **CAD 3D** environment, with remarkable advantages regarding studying the crane movements, efforts analysis, maximization of the details. All the technical documents supplied together with the crane are realized by the technical office and they guarantee completeness, information accuracy and an easy consultation.

Prototypes tests are carried on meticulously and under extreme conditions about the structure mechanical stress both in loading test phase and, for hydraulic cranes with low rotation, in assembling and disassembling phase (e.g. with jib alignment during assembling).



In the picture, the prototype is submitted to the jib alignment at the same time with the tower hoisting, operation which stimulates the crane structure and the assembling hydraulic plant at their maximum levels.

TKService.sk

TRAILERS 80 km/h

Luigi Cattaneo Ltd has obtained the European documented certification for its self-mounting hydraulic crane transportation on road; this recognition, achieved after a long and costly effort lasted more than a year, allows Cattaneo's Cranes high speed (80kph) transportation on road.

Luigi Cattaneo Ltd axles production commercial name: Otto

Otto series trailer (or semitrailer) together with a self-mounting Cattaneo crane constitutes a **vehicle approved according to 2007/46/EC guideline**. For this reason they can be registered as vehicles in any EC country and in Switzerland.

Otto series trailer and semitrailer are equipped with pneumatic suspension, ABS and EBS breaking system and warning light system; they are planned and manufactured according to current regulations.

Two solutions have been approved for Cattaneo cranes transportation on road at 80kph:

- 1) as **semitrailer** – **Otto type S020** – EC type-approval number e50*NKS*0003*00



- 2.a) as **2 axle shafts trailer** – **Otto type R110** – EC type-approval number e50*NKS*0001*00



2.b) as 3 axle shafts trailer - Otto type R120 - EC type-approval number e50*NKS*0002*00



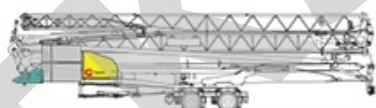
1) Semitrailer

In the semitrailer solution the crane is hooked into the ralla of the engine using a dedicated frame called “king pin”, same model for any crane. The approval has been given to the following crane models currently in production: CM 280 - CM 74S4 - CM 82S4 - CM 371 - CM 90S4.

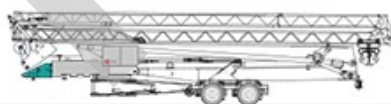
Semirimorchio - Otto S020



CM 280



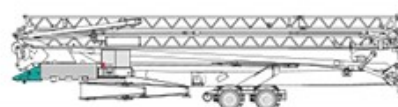
CM 74S4



CM 82S4



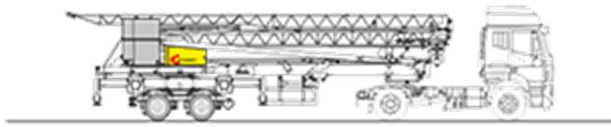
CM 371



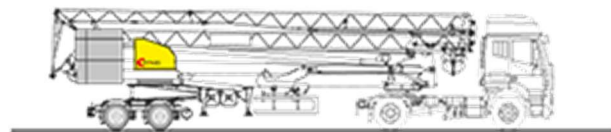
CM 90S4

Otto series semitrailer type S020 allows transportation on road also to the two cranes model CM 221 and CM 271 belonging to series "Fast pulling", cranes specifically designed for fast movement and installation at construction site.

Semirimorchio - Otto S020



CM 221



CM 271

2) 2 and 3 axles trailer

For the solution in which the crane is hooked to the trailer using a shaft. Only two types of trailers allow this movement with all the crane range in production.

The approval with 2 axles trailer (Otto series type R110) concerns the following crane models currently in production: CM 190 - CM 220 - CM 71A - CM 76B - CM 280 - CM 74S4.

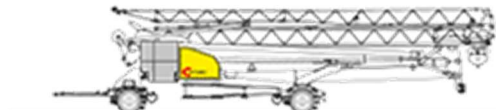
Rimorchio ad 1 asse - Otto R110



CM 190



CM 220



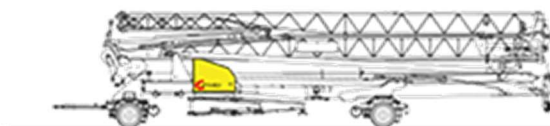
CM 71A



CM 76B



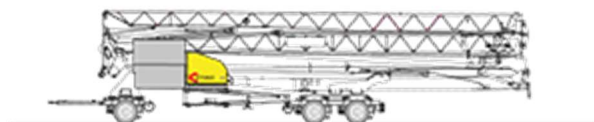
CM 280



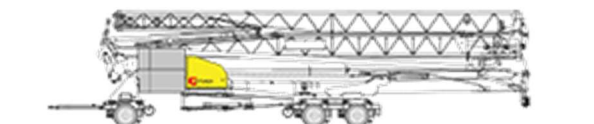
CM 74S4

The approval with 3 axles trailer (Otto series type R120) concerns the following crane models currently in production: CM 280 - CM 74S4 - CM 82S4 - CM 371 - CM 90S4

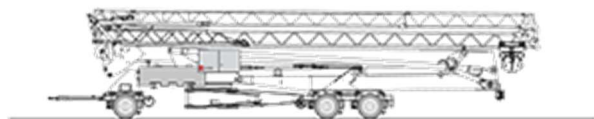
Rimorchio a 2 assi - Otto R120



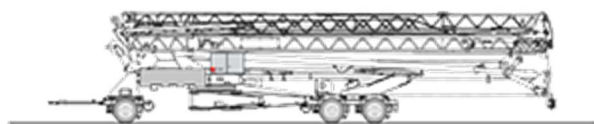
CM 280



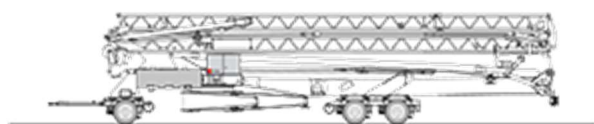
CM 74S4



CM 82S4



CM 371



CM 90S4

Approved trailers and semitrailers are manufactured by Luigi Cattaneo Ltd.

For their manufacturing we cooperate with De Angelis Ltd, road trailers important Italian manufacturer; the relationship between the two companies is exclusive and has a long duration.

With the technical and highly specialised contribution by De Angelis company, which we thank for having collaborated with enthusiasm to this important and ambitious project, we have realised good quality and approved (carrelature) specifically studied for hydraulic mounting crane pulling; besides, suggestions, changes while making prototypes and all the information supplied by our main European partners, have contributed to the aim (a special thank goes to our German and French importers, respectively **BKL Baukran Logistik** and **Vadori Grues**).

All components used are top quality: for instance, among all the possible alternatives, we have chosen axle groups and air suspensions made in Germany by BPW, the best available on the market; likewise the breaking system by KNORR-BREMSE.

Otto series trailers and semitrailers are supplied with (zincatura a caldo).

Dimensions and weights

LUIGI CATTANEO SPA

TRAILER R110

	L	W	H	H1	P
	m	m	m	m	kg
Steering axle and drawbar	2	2,49	2,2	1,4	1400
Fix axle (single)	1,75	2,49	0,9	*	1100
	(1,87 with lighting crossbar)				

TRAILER R120

	L	W	H	H1	P
	m	m	m	m	kg
Steering axle and drawbar	2	2,49	2,2	1,5	1400
Fix axle (double)	3	2,49	0,9	*	2000
	(3,12 with lighting crossbar)				

SEMITRAILER S020

	L	W	H	H1	P
	m	m	m	m	kg
Fix axle (double)	3	2,49	0,9	*	2000
	(3,12 with lighting crossbar)				

